

## EUROGLASS Balustrade Clamps

Euroglass have introduced three configurations of stainless steel clamps for interlocking the top edge of balustrades and pool fences. A key advantage of these new clamps is that no fixing holes are necessary.

Technical specifications include:

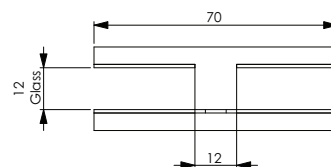
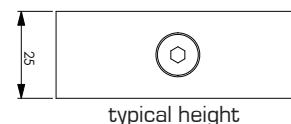
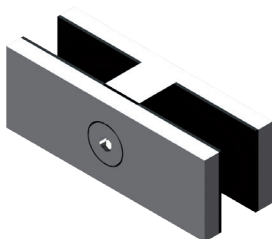
- Manufactured from 316 grade stainless steel
- Suit 12mm glass thickness
- Supplied in a polished or satin finish
- Includes rubber gasket inserts

### Glass-to-Glass

Code: BCI

**\$45.00\*** ea, polished

**\$49.00\*** ea, satin

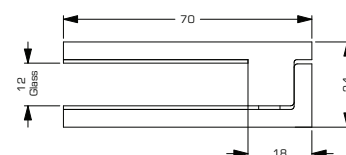
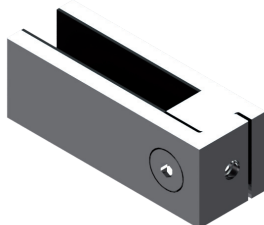


### Wall Mount

Code: BCWM

**\$70.00\*** ea, polished

**\$74.00\*** ea, satin

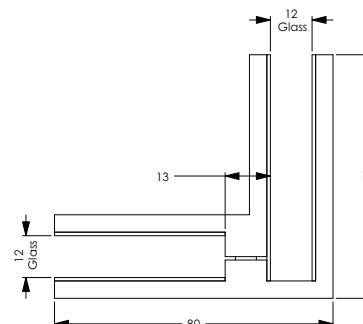
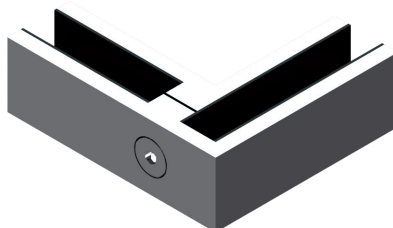


### 90° Corner

Code: BC90

**\$78.00\*** ea, polished

**\$82.00\*** ea, satin



\* Trade discounts apply

CALL **09 624 1180**

FAX 09 624 2280

EMAIL [hardware@euroglass.co.nz](mailto:hardware@euroglass.co.nz)