

EUROROLLER RS10

Euroglass has introduced a new series of quality sliding systems for shopfront and internal doors. Effortless and smooth movement is achieved by two stainless steel base rollers of 90mm diameter, gliding over a slim profile, stainless steel track. Combined with our COM1 top channel guide, this simple and smart system allows for any combination of door and side panel sizes, with a weight loading of up to 150kg per door.



Roller and Track
(using Freestyle glass with perforated steel interlayer)

CALL **09 624 1180**

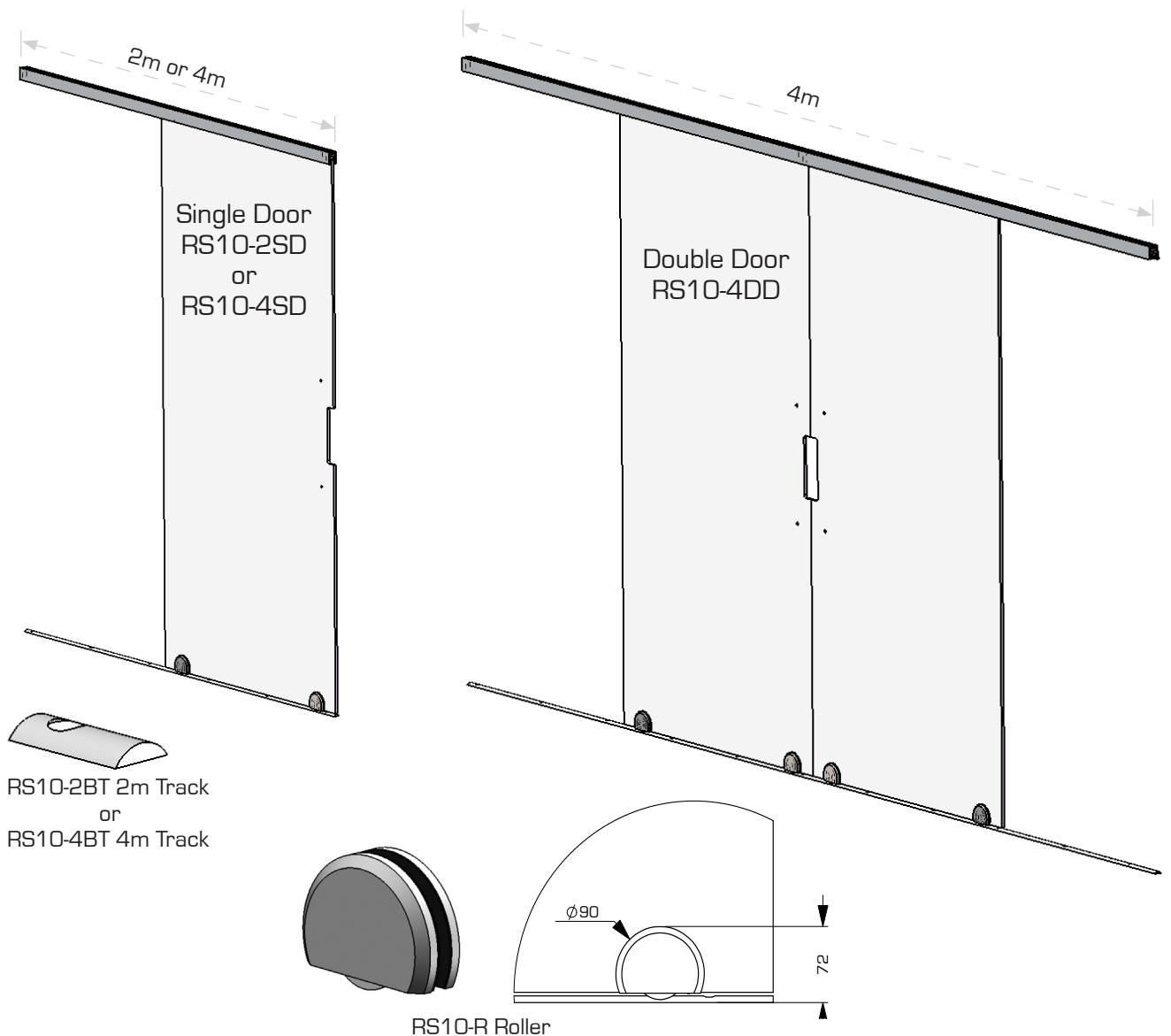
FAX 09 624 2280

EMAIL hardware@euroglass.co.nz

65 CARR ROAD, MT ROSKILL, AUCKLAND

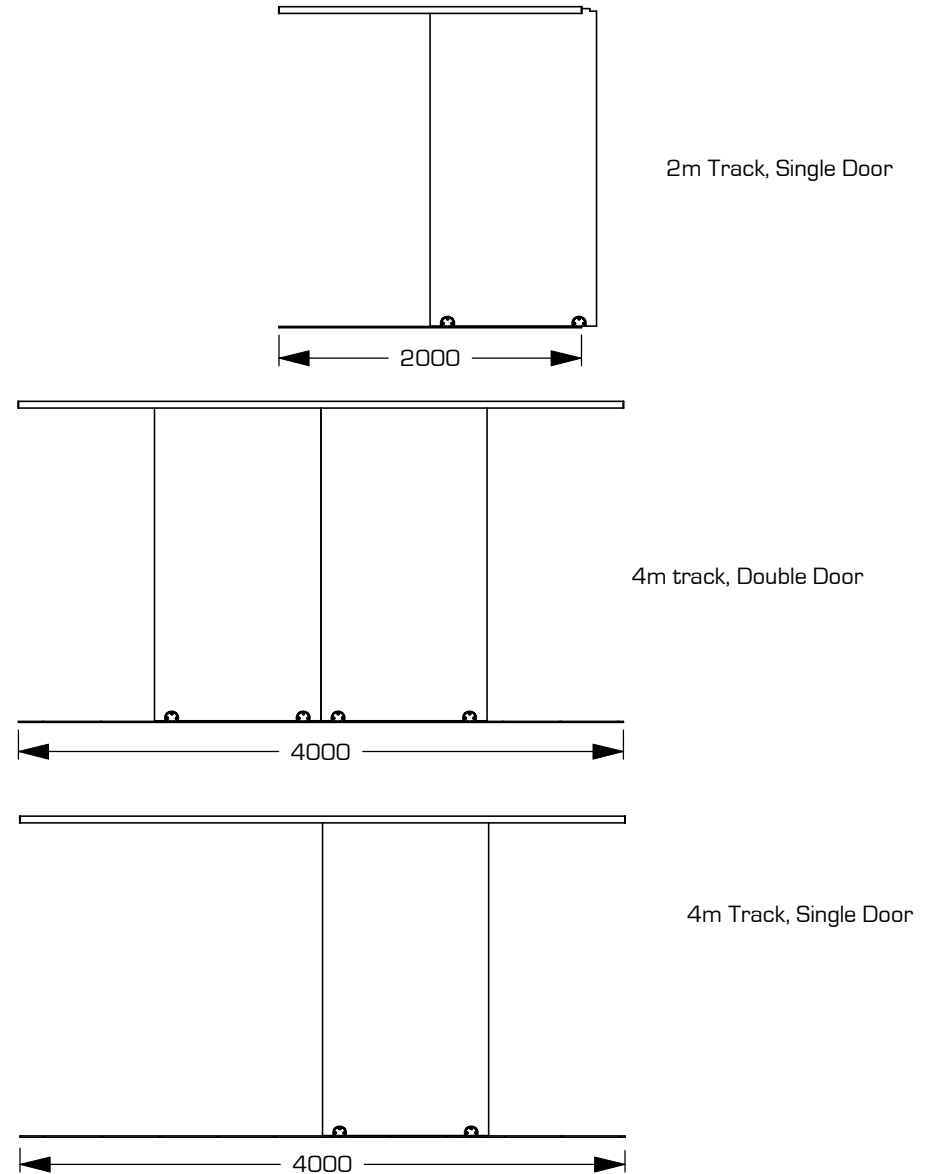
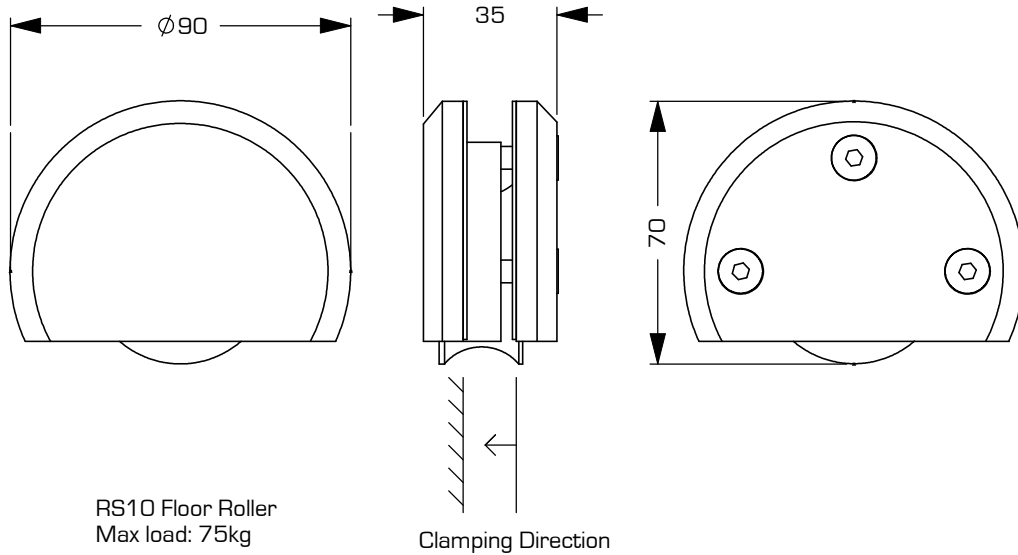
EUROROLLER RS10

- Manufactured from 316 grade stainless steel
- Finish: rollers supplied in satin or polished finish, floor track supplied satin finish only
- Suits 10mm and 12mm glass thickness
- Max door weight 150kg, two rollers per door
- Three pack options:
 - RS10-2SD:** 2m track, for single door - **\$764.00***
 - RS10-4SD:** 4m track, for single door - **\$982.00***
 - RS10-4DD:** 4m track, for double doors - **\$1,528.00***
- Each pack includes: Bottom Track (2 or 4m), 2 Rollers & 2 Stops per door, COM1 top channel guide (2or 4m), Felt seal, 2 COM3 End caps



*Trade discounts apply

Search Name	Description	Finish
RS10-2SDPS	RS10 2m Track Single Door Kit	Polished
RS10-2SDSS	RS10 2m Track Single Door Kit	Satin
RS10-4SDPS	RS10 4m Track Single Door Kit	Polished
RS10-4SDSS	RS10 4m Track Single Door Kit	Satin
RS10-4DDPS	RS10 4m Track Double Door Kit	Polished
RS10-4DDSS	RS10 4m Track Double Door Kit	Satin



© COPYRIGHT 2010

This drawing and or specification is the property of Euroglass Systems Ltd - and must be returned to them on request. Unauthorised use may result in Legal Action. Its contents must not be made public, nor copied, nor used directly or indirectly in any way.

Tolerance (Unless otherwise stated)

Dec place 0.00 ±0.1mm
 0.0 ±0.2mm
 0 ±0.5mm
 Angular: ±0.5°

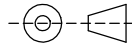
Special Instructions:

Remove all burrs & sharp edges.

euroglass

65 Carr Road
 Mt Roskill
 Auckland
 New Zealand
 +694 624-1180

DRAWN IN
 THIRD ANGLE
 PROJECTION



Material: See component drawings

Finish: Polished Rollers
 Satin Rollers

REV	MODIFICATIONS	DATE
A	First Drawn	17/05/11
-	-	-
-	-	-
-	-	-
-	-	-
-	-	-

Drawn:
 G.Bourne

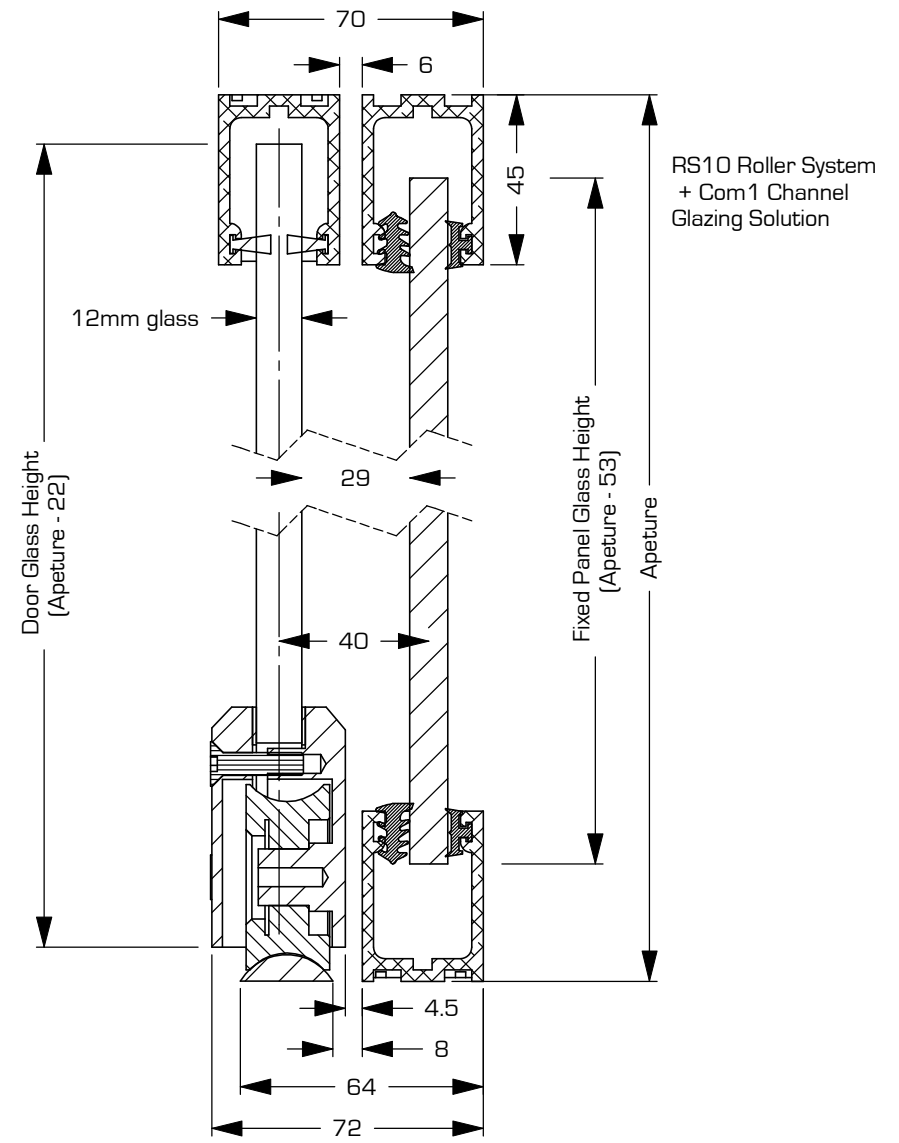
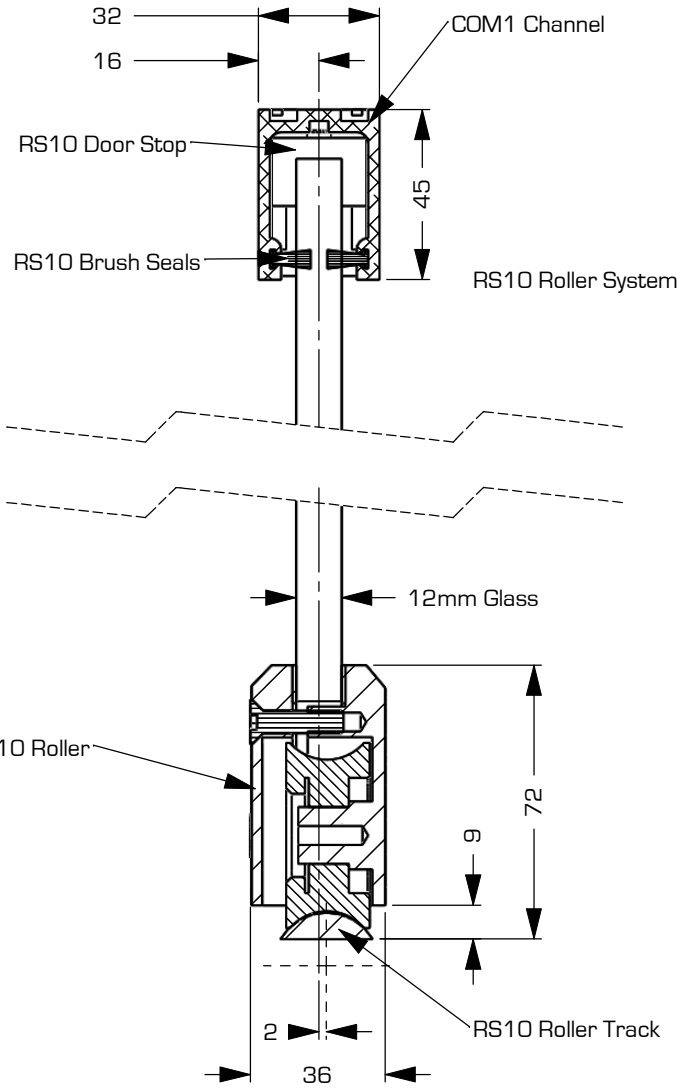
Date:
 17/05/11

Scale (A4): 1:50

Part Name:
 RS10 Sliding System

Drawing No.
 1022-2

Sheet:
 1 of 6



© COPYRIGHT 2010

This drawing and or specification is the property of Euroglass Systems Ltd - and must be returned to them on request. Unauthorised use may result in Legal Action. Its contents must not be made public, nor copied, nor used directly or indirectly in any way.

Tolerance (Unless otherwise stated)

Dec place 0.00 ±0.1mm
 0.0 ±0.2mm
 0 ±0.5mm
 Angular ±0.5°

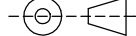
Special Instructions:

Remove all burrs & sharp edges.



65 Carr Road
 Mt Roskill
 Auckland
 New Zealand
 +694 624-1180

DRAWN IN
 THIRD ANGLE
 PROJECTION



Material: See component drawings

Finish: Polished Rollers
 Satin Rollers

REV	MODIFICATIONS	DATE
A	First Drawn	17/05/11
-	-	-
-	-	-
-	-	-
-	-	-

Drawn: P. Wood-Stotesbury

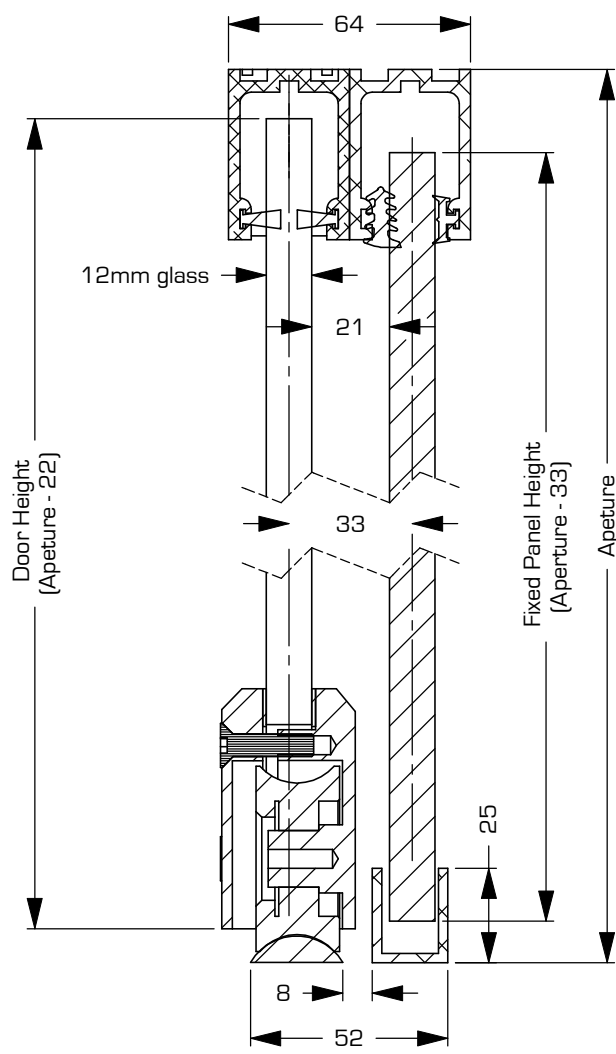
Date: 17/05/11

Scale (A4): 1:50

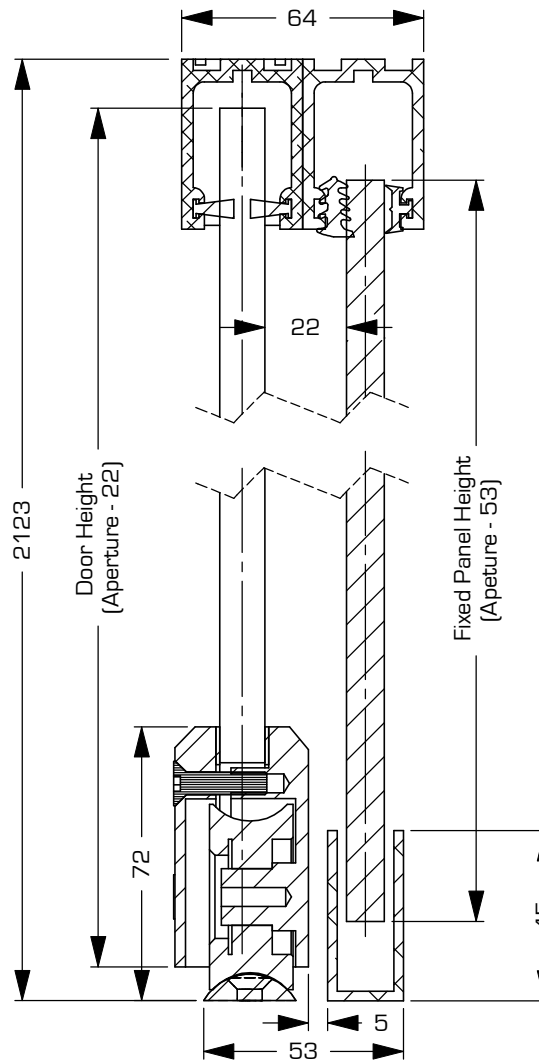
Part Name:
 RS10 Sliding System

Drawing No.
 1022-2

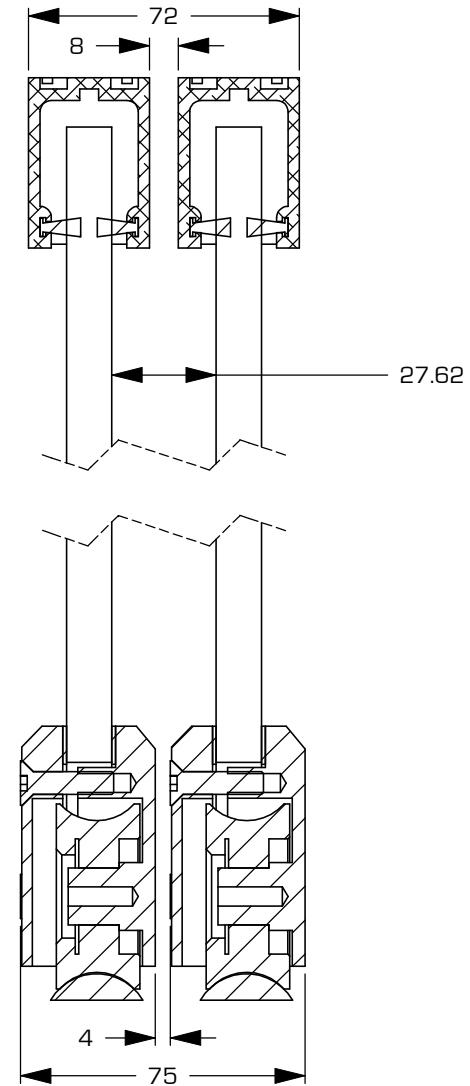
Sheet:
 2 of 6



RS10 Roller System
+ Fixed Panel
COM1 Top Channel
CU25 Floor Channel



RS10 Roller System
+ Fixed Panel
COM1 Top Channel
CU45 Floor Channel



Multiple RS10 Doors

© COPYRIGHT 2010

This drawing and or specification is the property of Euroglass Systems Ltd - and must be returned to them on request. Unauthorised use may result in Legal Action. Its contents must not be made public, nor copied, nor used directly or indirectly in any way.

Tolerance (Unless otherwise stated)

Dec place 0.00 ±0.1mm
0.0 ±0.2mm
0 ±0.5mm
Angular: ±0.5°

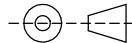
Special Instructions:

Remove all burrs & sharp edges.



65 Carr Road
Mt Roskill
Auckland
New Zealand
+694 624-1180

DRAWN IN
THIRD ANGLE
PROJECTION



Material: See component drawings

Finish: Polished Rollers
Satin Rollers

REV	MODIFICATIONS	DATE
A	First Drawn	17/05/11
-	-	-
-	-	-
-	-	-

Drawn:
P. Wood-Stotesbury

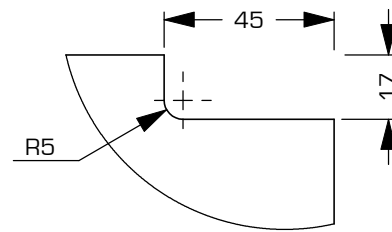
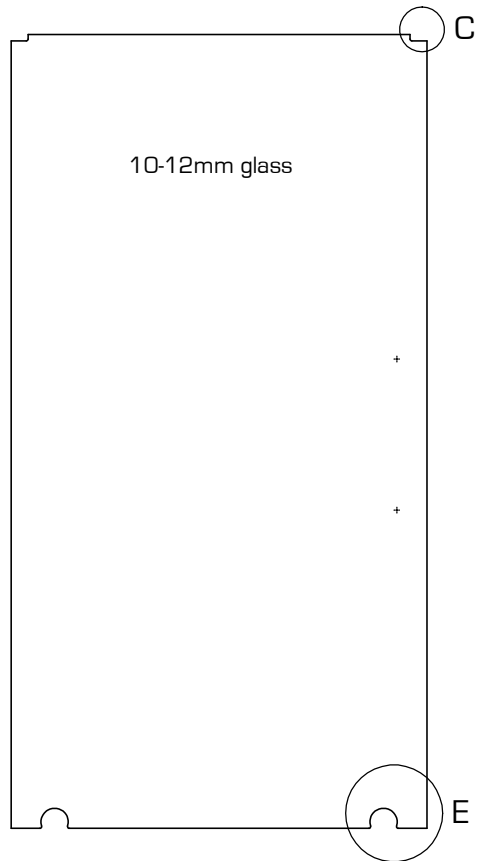
Date:
17/05/11

Scale (A4): 1:50

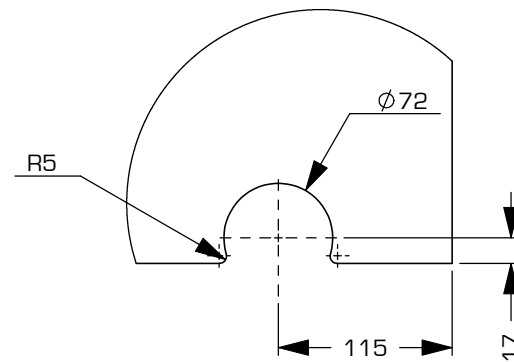
Part Name:
RS10 Sliding System

Drawing No.
1022-2

Sheet:
3 of 6



Door Stop Cutout (2 places)



Roller Cutout (2 places)

© COPYRIGHT 2010

This drawing and or specification is the property of Euroglass Systems Ltd - and must be returned to them on request. Unauthorised use may result in Legal Action. Its contents must not be made public, nor copied, nor used directly or indirectly in any way.

Tolerance (Unless otherwise stated)

Dec place 0.00 ±0.1mm
 0.0 ±0.2mm
 0 ±0.5mm
 Angular: ±0.5°

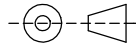
Special Instructions:

Remove all burrs & sharp edges.



65 Carr Road
 Mt Roskill
 Auckland
 New Zealand
 +694 624-1180

DRAWN IN
 THIRD ANGLE
 PROJECTION



Material: See component drawings

Finish: Polished Rollers
 Satin Rollers

REV	MODIFICATIONS	DATE
A	First Drawn	17/05/11
-	-	-
-	-	-
-	-	-
-	-	-
-	-	-

Drawn:
 G.Bourne

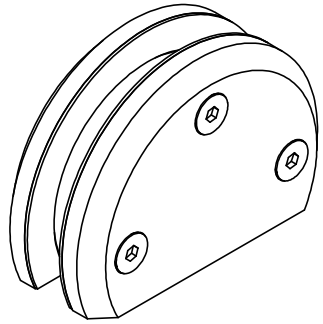
Date:
 17/05/11

Scale (A4): 1:50

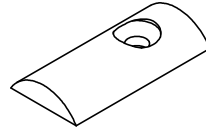
Part Name:
 RS10 Sliding System

Drawing No.
 1022-2

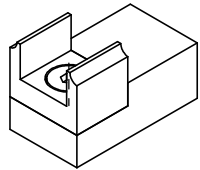
Sheet:
 4 of 6



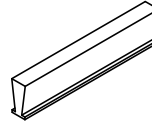
RS10 Roller



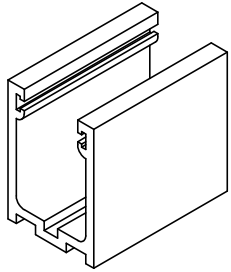
RS10 Roller Track



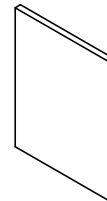
RS10 Stop
for COM1 Channel



RS10 COM Channel Brush Seal



COM1 Channel



COM3 End Cap

© COPYRIGHT 2010

This drawing and or specification is the property of Euroglass Systems Ltd - and must be returned to them on request. Unauthorised use may result in Legal Action. Its contents must not be made public, nor copied, nor used directly or indirectly in any way.

Tolerance [Unless otherwise stated]

Dec place 0.00 ±0.1mm

0.0 ±0.2mm

0 ±0.5mm

Angular: ±0.5°

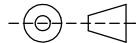
Special Instructions:

Remove all burrs & sharp edges.



65 Carr Road
Mt Roskill
Auckland
New Zealand
+694 624-1180

DRAWN IN
THIRD ANGLE
PROJECTION



Material: See component drawings

Finish: Polished Rollers
Satin Rollers

REV	MODIFICATIONS	DATE
A	First Drawn	17/05/11
-	-	-
-	-	-
-	-	-
-	-	-
-	-	-

Drawn:
P. Wood-Statesbury

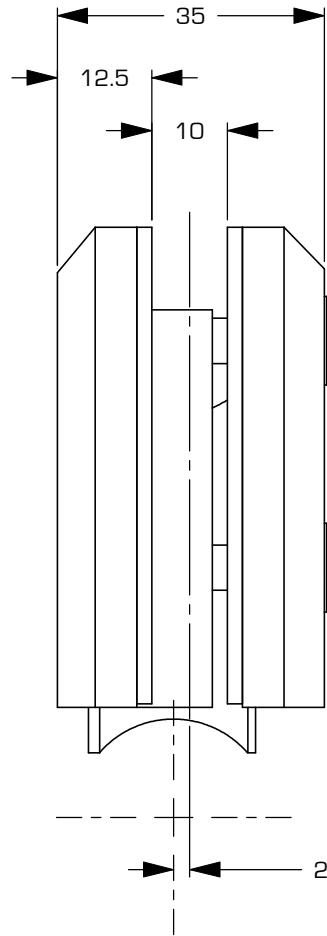
Date:
17/05/11

Scale (A4): 1:2

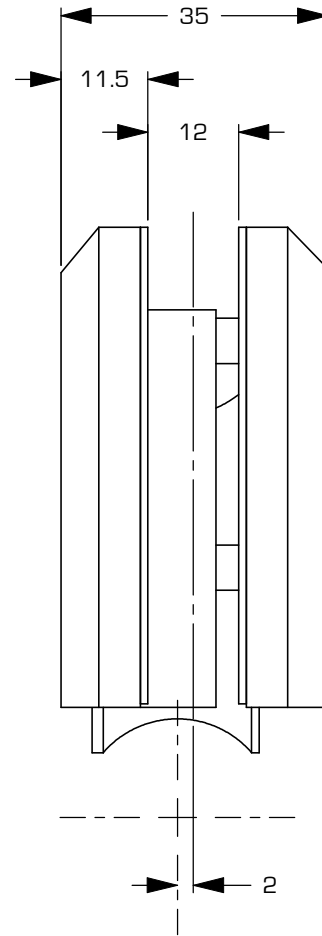
Part Name:
RS10 Sliding System

Drawing No.
1022-2

Sheet:
5 of 6



10mm Glass



12mm Glass

© COPYRIGHT 2010

This drawing and or specification is the property of Euroglass Systems Ltd - and must be returned to them on request. Unauthorised use may result in Legal Action. Its contents must not be made public, nor copied, nor used directly or indirectly in any way.

Tolerance [Unless otherwise stated]

Dec place 0.00 ±0.1mm

0.0 ±0.2mm

0 ±0.5mm

Angular ±0.5°

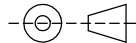
Special Instructions:

Remove all burrs & sharp edges.

euroglass

65 Carr Road
Mt Roskill
Auckland
New Zealand
+694 624-1180

DRAWN IN
THIRD ANGLE
PROJECTION



Material: See component drawings

Finish: Polished Rollers
Satin Rollers

REV	MODIFICATIONS	DATE
A	First Drawn	17/05/11
-	-	-
-	-	-
-	-	-
-	-	-
-	-	-

Drawn:
P. Wood-Stotesbury

Date:
17/05/11

Scale (A4): 1:1

Part Name:
RS10 Sliding System

Drawing No.
1022-2

Sheet:
6 of 6